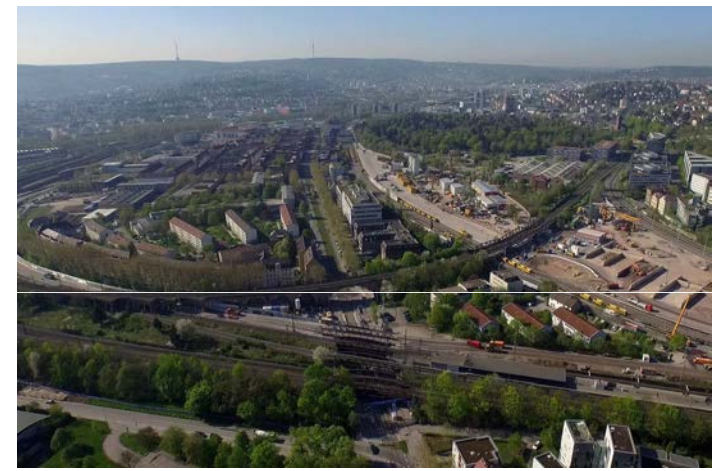


LANDSCHAFTSPLANUNG / GRÜNORDNUNG



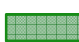
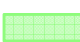


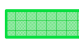
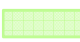
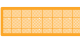


Gleisbogen mit Brückenbauwerken



Rosensteinpark und Lokschuppen

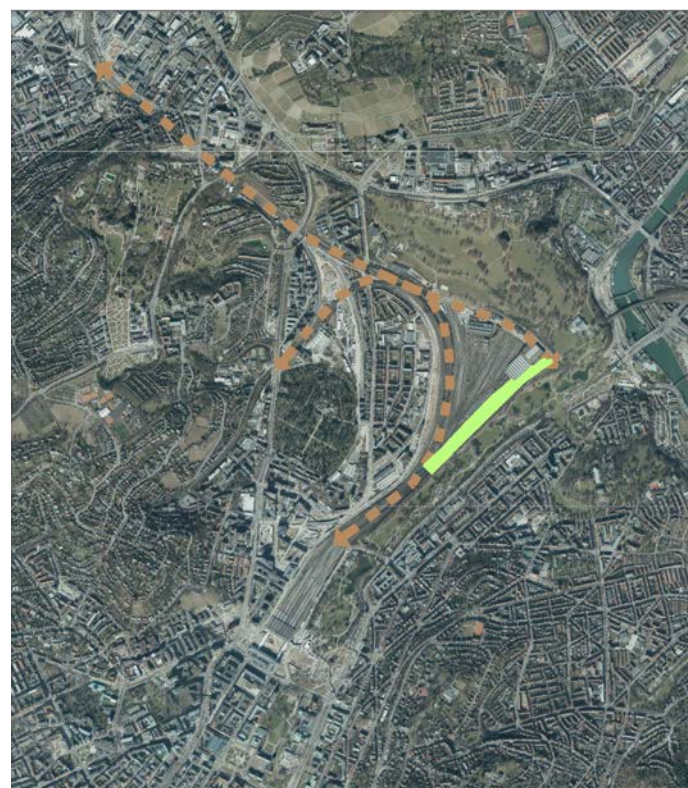
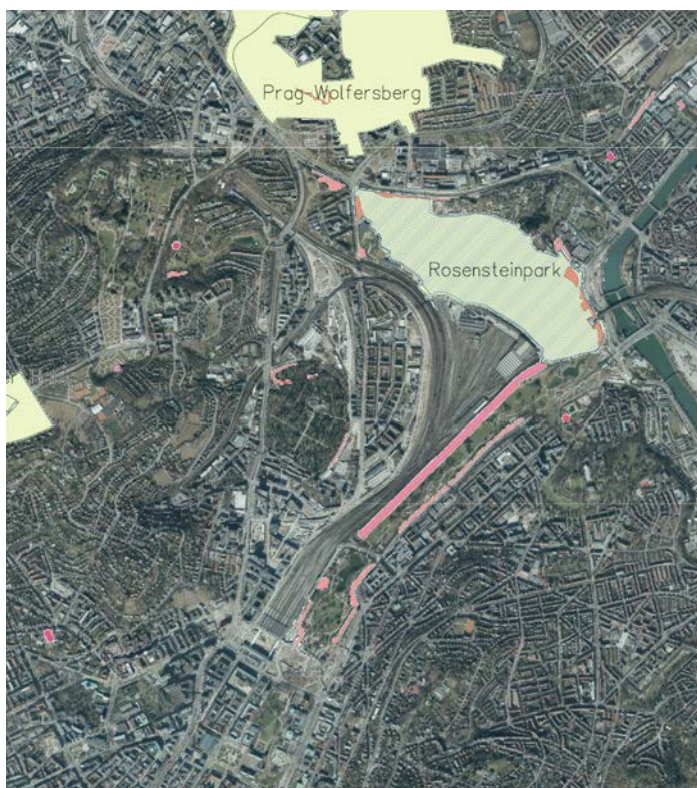


Überführungsbauwerk und Platanenallee




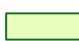

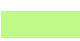

-  Grünes U
-  freizuhaltende Flächen Nordkreuz; Stand 1998
-  markante Gebäude
-  planfestgestellte Bauwerke S21; Stand 2016
-  weitere Parkanlagen
-  Erweiterung Grünanlagen nach Rahmenplan S21; Stand 1998
-  Ggfs. erhaltenswerte Bauwerke
-  Abgrenzung Entwicklungsfläche Rosenstein
-  Landschaftspark Neckar in Stuttgart



Platanenallee im Unteren Schlossgarten



Unterer Schlossgarten mit Gleisbogen

-  Naturschutzgebiet (NSG)
-  Naturdenkmal
-  erforderlicher Biotopverbund
-  Landschaftsschutzgebiet (LSG)
-  Biotop
-  Ausgleichsfläche A1 für PFA 1.1 trockenwarme Standorte
-  Natura 2000 FFH